



Freeze dryer Sublimator 25

0.84m² up to 2.02m² total shelf area

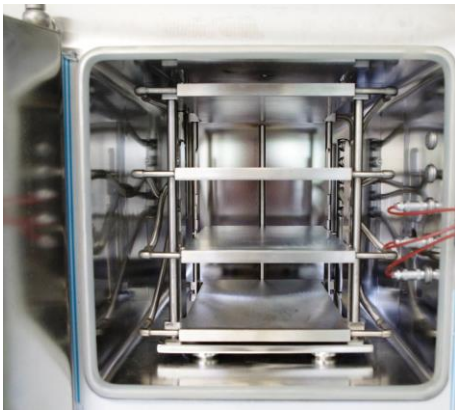


Stand alone version

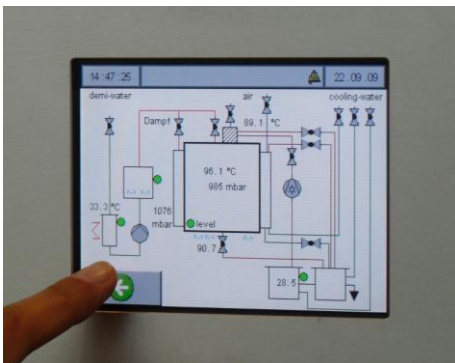
- Liquid tempered stainless steel shelves for freezing and drying
- Uniform temperature distribution +/-1°C during freezing and drying
- repeatable processes
- Integrated vacuum pump
- Industrial PLC control system with touchpanel
- Free programmable receipts
- Integrated vacuum regulation
- Complete stainless steel



Stainless steel door with show window



High quality GMP shelves



7" coloured touchpanel



uniform
ice condensation



Technical parameters:

Drying Chamber	W500 x H650 x D800mm Volume 260l Material 316L Door: Acrylic Glass (standard)
Shelve size with fixed shelves (bulk)	420x600mm
Shelve size with flexible shelves (to use with stoppering system)	350x600mm
Shelve configuration	4+1 shelves with 130mm distance 5+1 with 100mm 6+1 with 80mm 7+1 with 65mm 8+1 with 55mm 9+1 with 45mm
Shelve temperature range	a) -40...+60°C b) -60...+60°C
Condenser capacity	20kg/24h, max. 30kg
Condenser temperature	a) <-50°C b) <-80°C
Vacuum controlling	With magnetic valve between condenser and vacuum pump
Vacuum sensor	Pirani vacuum sensor 0.001...1000mbar
Controller	Mitsubishi FXN PLC (Siemens optional)
Operator panel	7" coloured touchpanel
Programs	20 programs, each one with: 10 freezing steps 10 main drying steps 10 secondary drying steps
Outer dimensions: W1400 x H1850 x D950mm (1000 with door), 400V/50Hz/32A	
Additional options: Manifold with 6 connections and rubber valves Electro hydraulic stoppering system Variable shelve distances N2-liquid cooling system Batch documentation software via Ethernet oder printers Visualisation software Scada Product trays Stainless steel door Combi sensor for temperature and conductivity Oil free Vacuum pumps Separation valve between chamber and condenser ATEX	



Wall integration:



Variable shelf distances:

9 shelves 45mm



6 shelves 70mm

